

bVIPOM

D R I P

I R R I G A T I O N

S Y S T E M S

VIDIN 2008

COMPANY DEVELOPMENTS IN THE SPHERE OF DRIP IRRIGATION SYSTEMS

Dear customers,

Keeping up with the innovations in agriculture we are pleased to present to you our quotation for drip irrigation systems depending on the type of plants and water supply for 1 hectare vegetable gardens and orchards.

This quotation is valid for the standard make. The complete set of equipment is available on the basis of the principle scheme according to the specific needs and requirements of the customers. There is also an opportunity of individual designs. Enclosed please find the prices for submersible pump systems and mounted tractor driven pump attachment systems. Total prices are subject to consideration depending on the volume of the order.

We hope that our quotation will interest you.

DRIP IRRIGATION SYSTEMS - VEGETABLE FARMS

DRIP IRRIGATION SYSTEMS ENGINEERING AND CONFIGURATION FOR 1 HECTARE VEGETABLE FARMS



Kind of vegetables	Planting Plan	Price EUR, ExW - Vidin		
		Field network	Water supply	TOTAL
Tomatoes	120+50 x 20 cm	1 149	1 335	2 484
Cucumbers	110+50 x 5 cm	1 149	1 335	2 484
Pepper	70+45+45x15 cm	2 282	1 335	3 617
Cabbage	80+40+40x50 cm	2 282	1 335	3 617

1. Field network comprises:

- a) Main control unit including filter and fertilizer ejector.
- b) Underground (stationary) pipe network, distribution pipes including pipe fittings.
- c) Ground pipe network, irrigating wings and sprinklers, including pipe fittings and accessories.

2. Water supply equipment comprises:

- a) Feed semisubmersible pump type 6E32M with electric motor of 4 kW;
- b) Suction pipe 8 m;
- c) PVC delivery pipe ø63 - 50 m;
- d) Suction valve;
- e) Hydrant;
- f) Local protected electric panel;

DRIP IRRIGATION SYSTEMS - ORCHARD

DRIP IRRIGATION SYSTEMS ENGINEERING AND CONFIGURATION FOR 1 HECTARE ORCHARDS



Type of fruit trees	Planting Plan	Price - EUR, ExW - Vidin		
		Field network	Water supply	TOTAL
PLUM TREES	6 x 5 m	3 993	1 335	5 328
APPLE TREES	4 x 2,5 m	3 993	1 335	5 328

1. Field network comprises:

- Main control unit including filter and fertilizer ejector.
- Underground (stationary) pipe network, distribution pipes including pipe fittings.
- Ground pipe network, irrigating wings and sprinklers, including pipe fittings and accessories.

2. Water supply equipment comprises:

- Feed semisubmersible pump type 3E32M with electric motor of 6 kW;
- Suction pipe 8 m;
- PVC delivery pipe $\varnothing 50$ - 50 m;

WATER SUPPLY FOR 30 METERS DEEP WELLS

FOR WATER SUPPLY SYSTEMS
WITH DISTANCE BETWEEN THE GROUND
SURFACE AND THE WATER LEVEL IN THE WELL
NOT MORE THAN 7 METERS



Plantation type	Area, hectares	Price - EUR, ExW - Vidin
		Water supply system
VEGETABLE GARDEN	1	3 018
GARDEN	1	2 660

1. The water supply system comprises:

- a) Submersible feed pump for 30 m deep well;
- b) Steel delivery pipe - 20 m;
- c) PVC delivery pipe - 50 m;
- d) Hydrant;
- e) Local protected electric panel;
- f) Power cable.

WATER SUPPLY FOR 45 METERS DEEP WELLS

FOR WATER SUPPLY SYSTEMS
WITH DISTANCE BETWEEN THE GROUND
SURFACE AND THE WATER LEVEL IN THE WELL
NOT MORE THAN 7 METERS



Plantation type	Area, hectares	Price - EUR, ExW - Vidin
		Water supply system
VEGETABLE GARDEN	1	3 400
GARDEN	1	3 400

1. The water supply system comprises:

- a) Submersible feed pump for 45 m deep well;
- b) Steel delivery pipe - 20 m;
- c) PVC delivery pipe - 50 m;
- d) Hydrant;
- e) Local protected electric panel;
- f) Power cable.

MOUNTED TRACTOR DRIVEN ATTACHMENTS

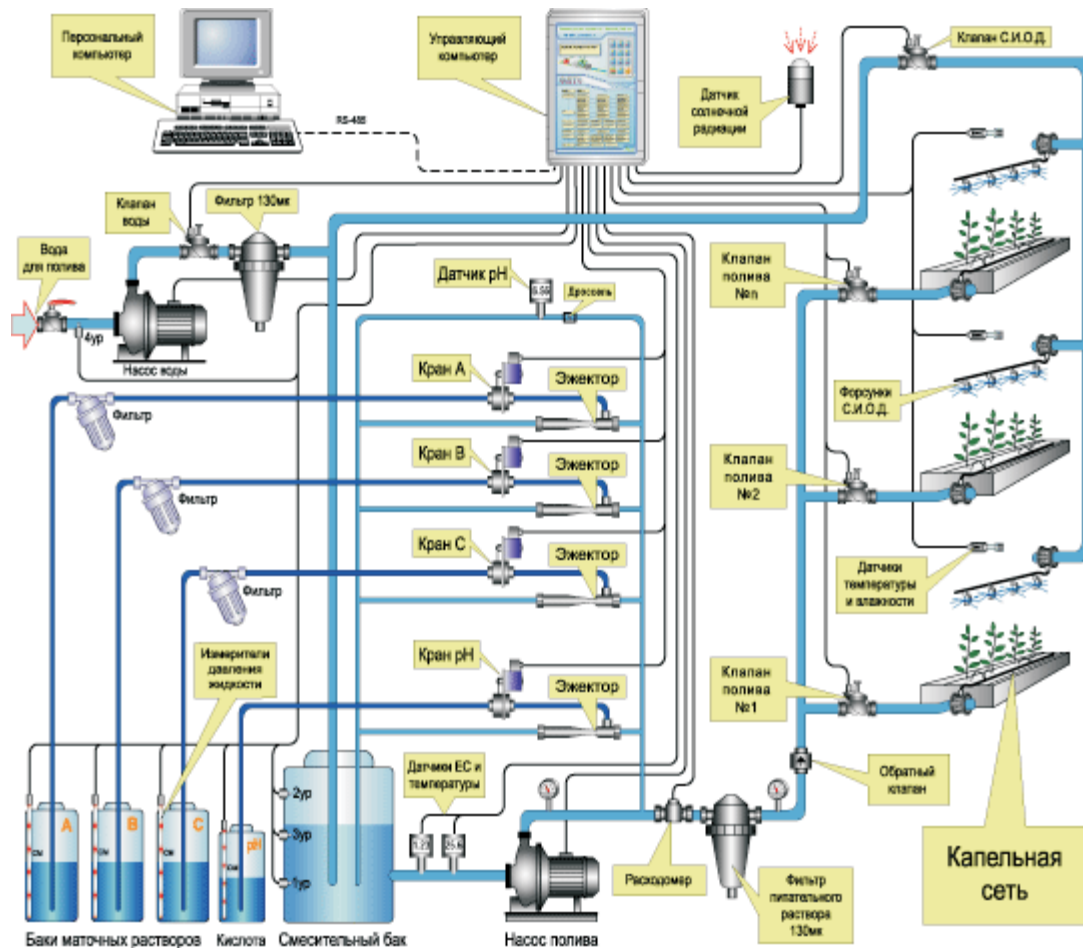
TRACTOR DRIVEN PUMPS
ATTACHMENTS
WITH DISTANCE BETWEEN THE
GROUND LEVEL AND THE WATER
SOURCE LESS THAN 7 M



TRACTOR DRIVEN ATTACHMENTS

Plantation type	Area, hectare	Pump Type	Price - EUR, ExW - Vidin
VEGETABLE GARDEN	1	MPP 6E32	493
	7	MPP 50E50A	916
GARDEN	1	MPP 3E32	469
	15	MPP 50E50A	916

DRIP IRRIGATION SYSTEM SCHEME



The complete set of equipment is available on the basis of this scheme.

Delivery of equipment and individual designs are carried out according with the specific needs and requirements of the customers.



Contact information:

The company:

VIPOM JSC.

3700 Vidin, Bulgaria
9, Tzar Ivan Asen II Str
Tel. (+359 94) 609 025
Fax. (+359 94) 609 021
e-mail: vipom@vipom.com
http:// vipom.com

CEO:

Tel: (+359 94) 609 025
Marketing Department Tel: (+359 94) 609 020
Sales Department Tel: (+359 94) 609 032

Authorized representative:

52 Mosfilmovskaya Str.
119285 Moscow/Russia
Tel/fax: (+7 495) 143 89 68
e-mail: m@vipom.com

1574, Sofia, Bulgaria
1 of., 1 fl., 2A, Temenuga St.
Tel: (+3592) 971 56 71
Fax: (+3592) 971 56 70
e-mail: sofia@vipom.com

VIDIN 2008